

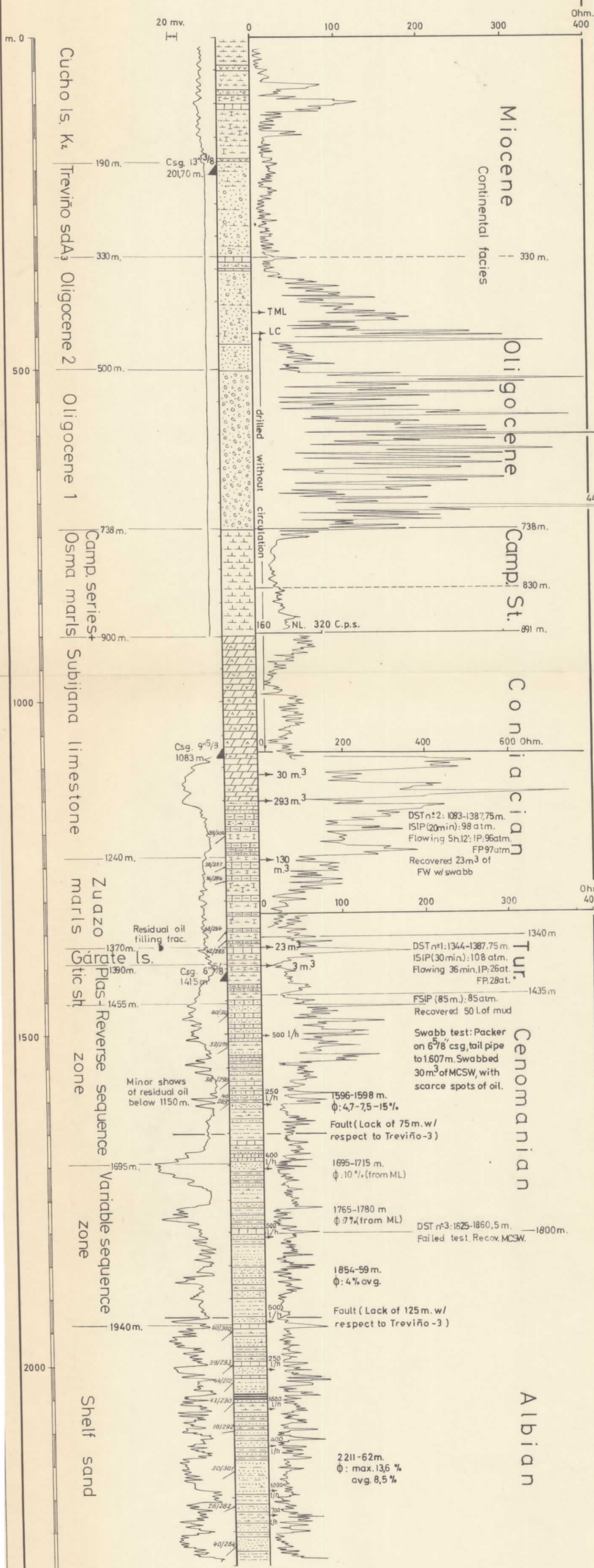
# AÑASTRO-1

18/4/1964-28/7/1964

42° 44' 45" N

0° 54' 58" E

582,30m.a.s.l.



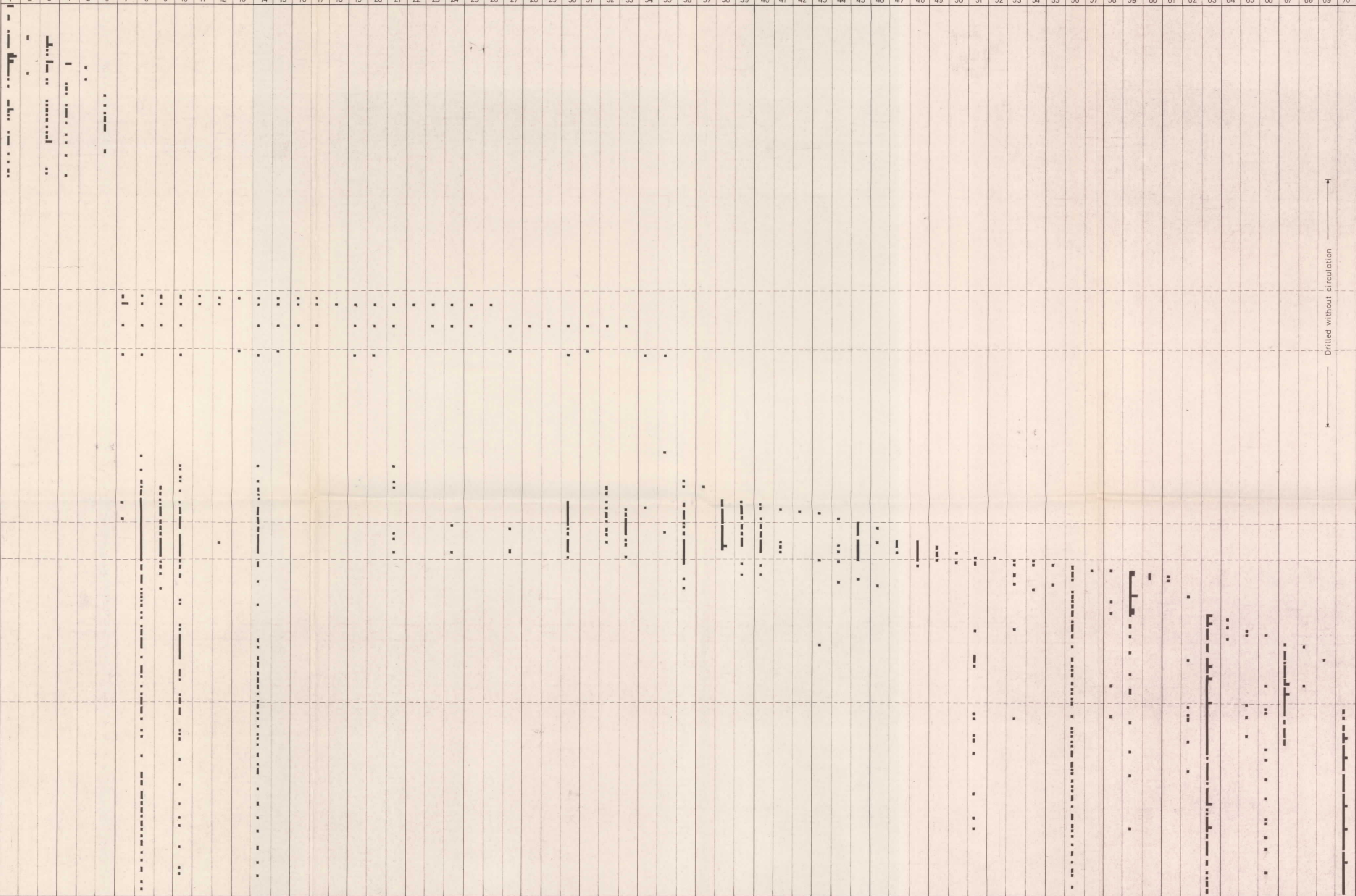
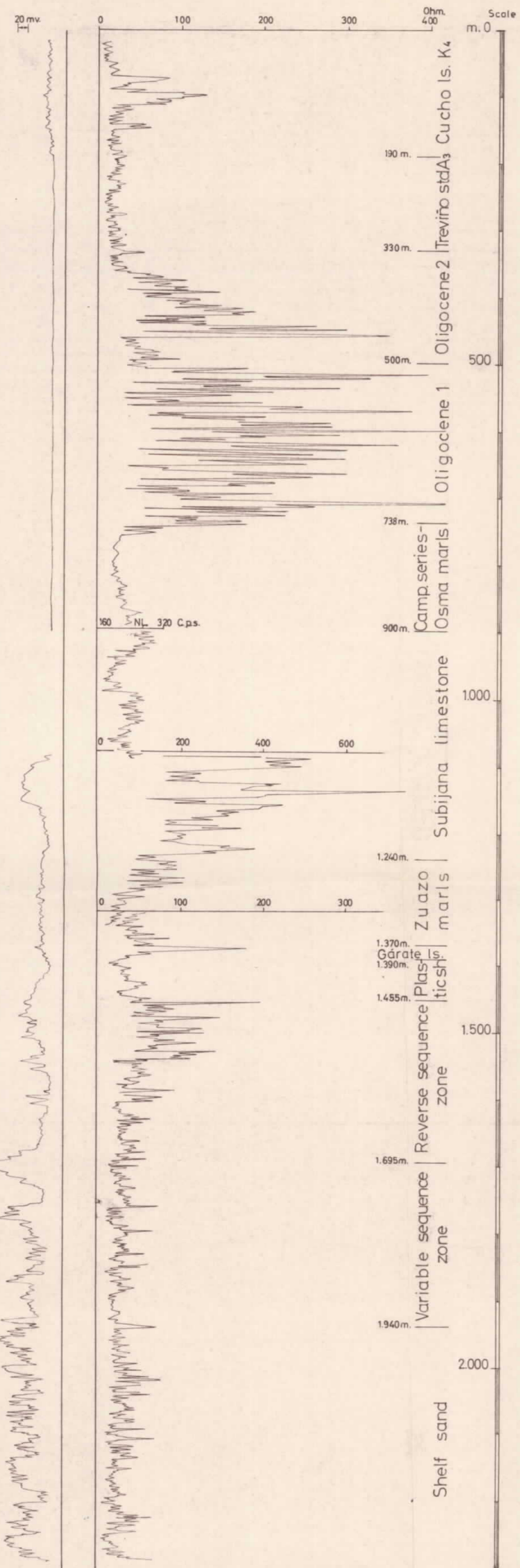
Total Depth 2.293,30m.

Scale 1:5000

Alphabetic index

- 19 *Aziobaculites* sp.
- 24 *Ataxythere* sp.
- 15 *Alamorphina* cf. *alamorphinoides*
- 28 *Ammobaculites* *luteus*
- 33 *Ammobaculites* cf. *laganalis*
- 66 *Anomalina* cf. *parvispira*
- 11 *Arenobaculites* cf. *preslii*
- 32 *Bairdia* sp.
- 41 *Bigenaria* sp.
- 10 *Bullimma* sp.
- 50 *Cibicides* *vittiana*
- 31 *Cythereis* sp.
- 18 *Cythereis* sp.
- 21 *Daxia* *centomma*
- 43 *Denticulina* cf. *verrebatilis*
- 14 *Fibellammima* cf. *alexanderi*
- 58 *Gaudryina* sp.
- 17 *Globigerina* *laevigata*
- 56 *Globotruncana* *concovata*
- 26 *Globotruncana* *concovata*
- 44 *Globotruncana* cf. *fornicata*
- 49 *Globotruncana* *helvetica*
- 29 *Globotruncana* *lagarretti*
- 47 *Globotruncana* *lineata*
- 45 *Globotruncana* cf. *rezi*
- 30 *Globotruncana* *sigali*
- 48 *Globotruncana* *ventricosa*
- 39 *Gyrogonioides* *nitida*
- 25 *Hoplagonium* 205
- 22 *Hoplagonioides* *nitida*
- 27 *Heteroelex* sp.
- 38 *Ilyocypris* sp.
- 16 *Lenticulina* sp.
- 69 *Littoralia* cf. *irregularis*
- 52 *Margulinulina* *trilobata*
- 5 *Marsocella* cf. *lurida*
- 8 *Moulds* of *Lamellibranchia*
- 12 *Nummulitella* *cretacea*
- 60 *Ogona* cf. *characeae*
- 7 *Orbitolina* *concovata*
- 9 *Orbitolina* *tesana* *aperta*
- 2 *Orbitolina* *tesana* *aperta*
- 13 *Orbitolina* *tesana* *aperta*
- 59 *Orbitolina* *tesana* *aperta*
- 63 *Orbitolina* *tesana* *aperta*
- 67 *Orbitolina* *tesana* *aperta*
- 70 *Orbitolina* *tesana* *aperta*
- 3 *Orbitolina* *tesana* *aperta*
- 6 *Orbitolina* *tesana* *aperta*
- 40 *Orbitolina* *tesana* *aperta*
- 37 *Orbitolina* *tesana* *aperta*
- 64 *Orbitolina* *tesana* *aperta*
- 55 *Orbitolina* *tesana* *aperta*
- 68 *Orbitolina* *tesana* *aperta*
- 54 *Orbitolina* *tesana* *aperta*
- 61 *Orbitolina* *tesana* *aperta*
- 42 *Orbitolina* *tesana* *aperta*
- 62 *Orbitolina* *tesana* *aperta*
- 46 *Orbitolina* *tesana* *aperta*
- 34 *Orbitolina* *tesana* *aperta*
- 57 *Orbitolina* *tesana* *aperta*
- 65 *Orbitolina* *tesana* *aperta*
- 53 *Orbitolina* *tesana* *aperta*
- 36 *Orbitolina* *tesana* *aperta*
- 51 *Orbitolina* *tesana* *aperta*
- 4 *Orbitolina* *tesana* *aperta*
- 23 *Orbitolina* *tesana* *aperta*

- 1 *Ogona* cf. *characeae*
- 2 *Moulds* of *Lamellibranchia*
- 3 *Ostracoda*
- 4 *Upper characeae* (*retrorsus*)
- 5 *Ilyocypris* sp.
- 6 *Ilyocypris* *micra* (*retrorsus*)
- 7 *Margulinulina* *cretacea*
- 8 *Lenticulina* *trilobata*
- 9 *Marsocella* sp.
- 10 *Bairdia* sp.
- 11 *Anomalina* cf. *lurida*
- 12 *Littoralia* cf. *irregularis*
- 13 *Nummulitella* *cretacea*
- 14 *Cythereis* sp.
- 15 *Alamorphina* sp.
- 16 *Hoplagonium* 205
- 17 *Denticulina* cf. *alamorphinoides*
- 18 *Cibicides* *vittiana*
- 19 *Arenobaculites* *lagarretti*
- 20 *Globotruncana* *concovata*
- 21 *Globotruncana* *lineata*
- 22 *Globotruncana* *concovata*
- 23 *Globotruncana* cf. *fornicata*
- 24 *Globotruncana* *helvetica*
- 25 *Globotruncana* *lagarretti*
- 26 *Globotruncana* *concovata*
- 27 *Globotruncana* *ventricosa*
- 28 *Gyrogonioides* *nitida*
- 29 *Ammobaculites* *luteus*
- 30 *Globotruncana* *concovata*
- 31 *Bullimma* sp.
- 32 *Arenobaculites* *lagarretti*
- 33 *Arenobaculites* *lagarretti*
- 34 *Ammobaculites* cf. *preslii*
- 35 *Textularia* sp.?
- 36 *Pseudobullimma* cf. *laganalis*
- 37 *Tritaria* *tricarinata*
- 38 *Pseudobullimma* *concovata*
- 39 *Hoplagonium* 205
- 40 *Globotruncana* *sigali*
- 41 *Pseudobullimma* *concovata*
- 42 *Agilolocia* sp.
- 43 *Sarcoceras* sp.
- 44 *Cythereis* sp.
- 45 *Gaudryina* sp.
- 46 *Globotruncana* *laevigata*
- 47 *Springerella* *helvetica*
- 48 *Globotruncana* cf. *laganalis*
- 49 *Globotruncana* cf. *fornicata*
- 50 *Globotruncana* cf. *rezi*
- 51 *Bigenaria* sp.
- 52 *Globotruncana* cf. *parabubia*
- 53 *Trochammina* sp.
- 54 *Heterelix* sp.
- 55 *Tritaria* *pyramidalis*
- 56 *Ratallipora* *cushmani*
- 57 *Pseudobullimma* *concovata*
- 58 *Fibellammima* *cretacea*
- 59 *Tritaria* *tricarinata*
- 60 *Daxia* *centomma*
- 61 *Orbitolina* *concovata*
- 62 *Littoralia* sp.
- 63 *Ratallipora* *greenhornensis*
- 64 *Springerella* *helvetica*
- 65 *Orbitolina* *concovata*
- 66 *Pseudobullimma* *concovata*
- 67 *Tripasira* cf. *aculacarinata*
- 68 *Ammobaculites* cf. *laganalis*
- 69 *Orbitolina* *tesana* *aperta*
- 70 *Ratallipora* *cushmani*
- 71 *Heteroelex* *washtenensis*
- 72 *Orbitolina* *tesana* *aperta*



TERTIARY (non marine)

738m (according to electric logs)

CAMPANIAN and/or SANTONIAN

830m SANTONIAN

891m

CONIACIAN

1235m

LOWER CONIACIAN

1340m

TURONIAN

1435m

MIDDLE CENOMANIAN

1655m

LOWER CENOMANIAN

about 1800m

ALBIAN

Total depth 2293,30m.

— Frequent  
- Common  
• Rare

CIEPSA - Vitoria

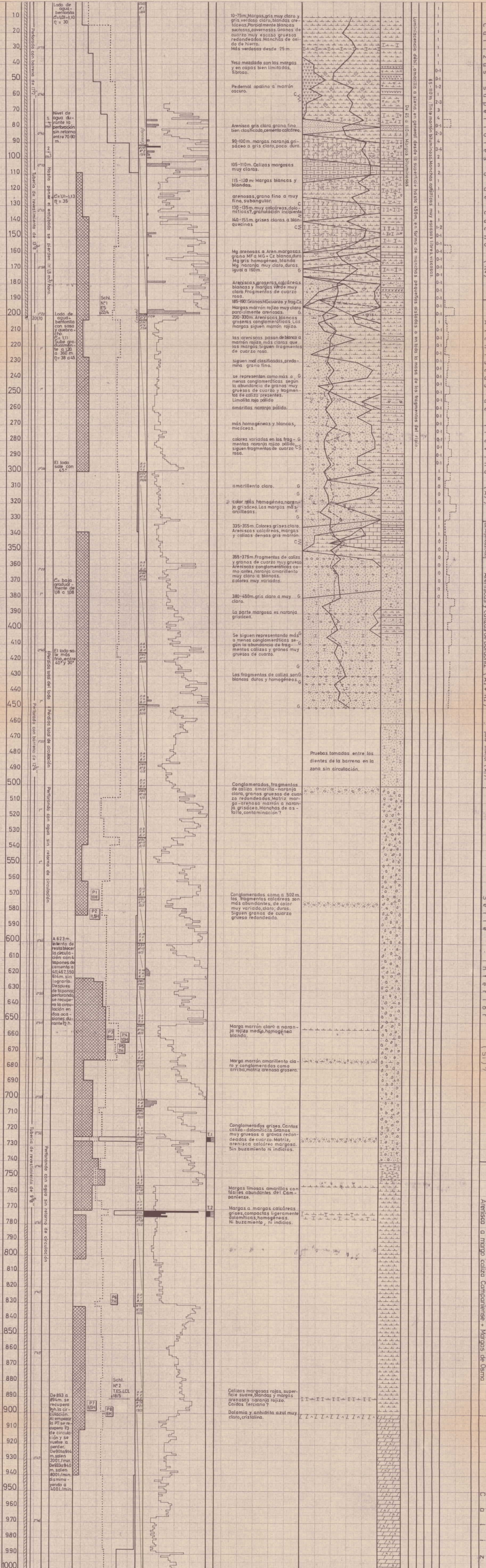
Well

**AÑASTRO - 1**

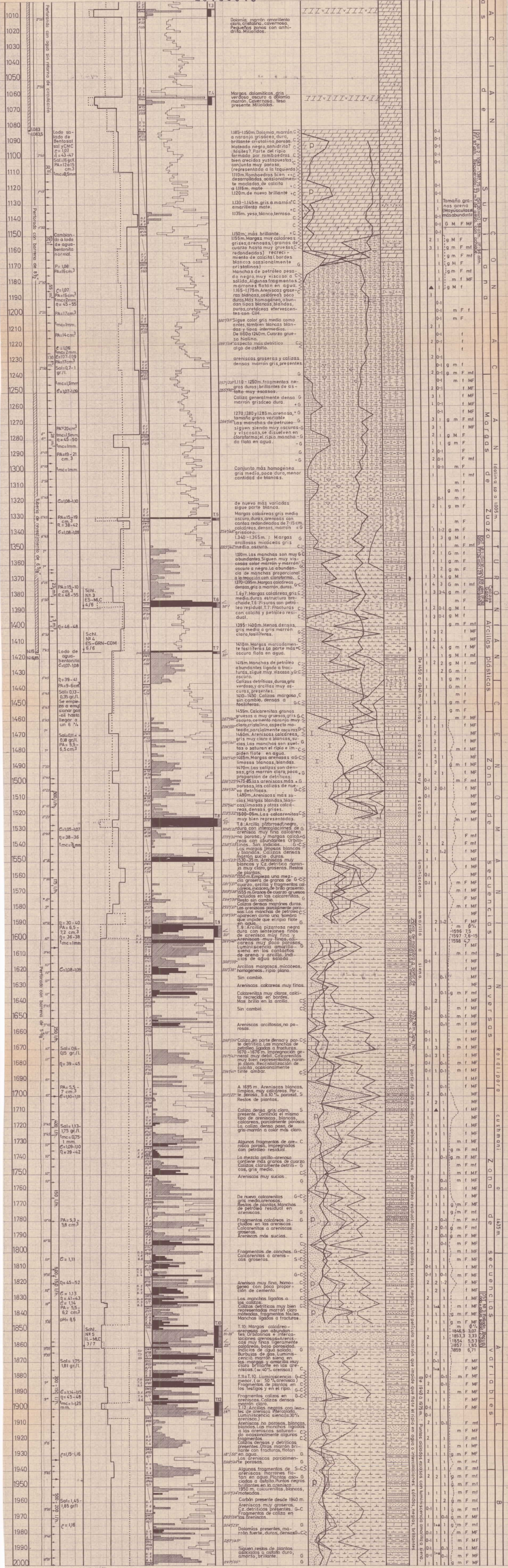
Distribution of microfauna

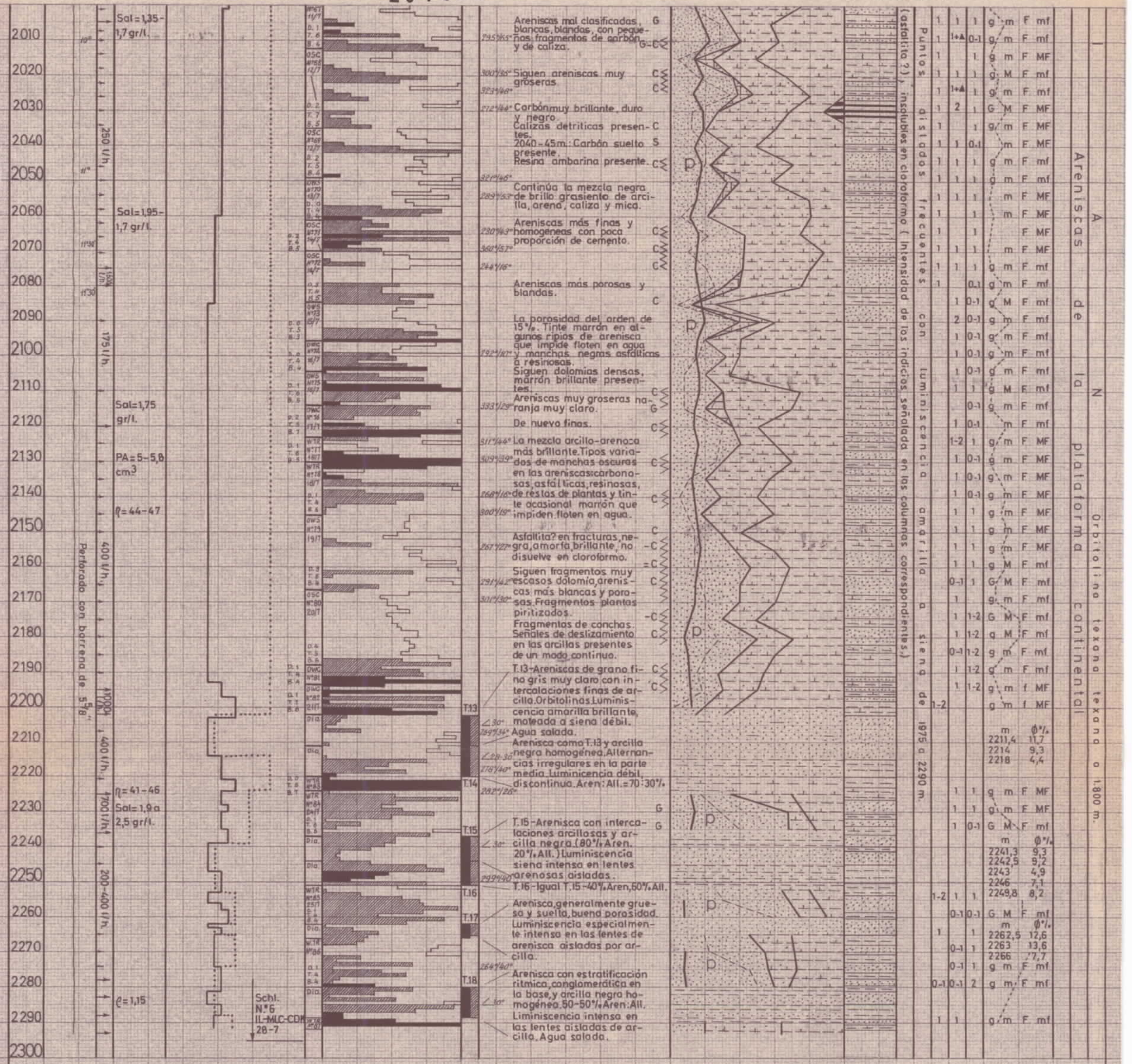
Scale 1:5000





CALIZAS SUPERIORES O DE CUCHIBOL (4)  
 ARENISCAS DE TREVINO (A3)  
 CAMPAÑENSE (K1)  
 ARENISCAS Y CALIZAS DE DORDONIZ (A2 + K2)  
 MARGOS DE OSMA (S1)  
 CAMPAÑENSE + MARGOS DE OSMA





Profundidad final 2293,30m.

COUNTRY SPAIN  
 FIELD AÑASTRO  
 WELL 1  
 COMPANY C I E P S A

COMPANY C I E P S A **20138**  
 WELL 1  
 FIELD AÑASTRO  
 COUNTRY ESPAÑA STATE ALAVA

Location :  
 Other Services :  
 BSS, GDM

Ref. No : SSP-64-051  
 Elev. : K.B. \_\_\_\_\_  
 D.F. \_\_\_\_\_  
 G.L. \_\_\_\_\_

Permanent datum TR ; Elev. : \_\_\_\_\_  
 Log Measured From 0 Ft. Above Perm. Datum  
 Drilling Measured From 0 Ft. Above Perm. Datum  
 RUN No. | Depth Scale 1 | 1/1000

Date 7-8/6/64  
 First Reading 1100  
 Last Reading 875  
 Interval Measured 225  
 Casing Schlumberger -  
 Casing Driller -  
 Depth Reached 1083

Bottom Driller 1416.85  
 Mud Nature Bentonita  
 Density | Viscosity 1.08 | 46

Mud Resistivity 5 (n) 1290 °F  
 Mud Resist. BHT 2.8 (n) 3800 °F  
 pH | Fluid Loss 8.4 | 14 CC/30 min.  
 Origin of Sample Circulation

Rmf 2.5 (n) 3800 °F  
 Rmc 2.35 (n) 3800 °F  
 Bit Size 1 8 1/2 To \_\_\_\_\_ To \_\_\_\_\_  
 Casing Size 2 9 1/8 To \_\_\_\_\_ To \_\_\_\_\_  
 Oper. Rig Time 2 H 30  
 Truck No. 1774  
 Recorded By B. GONZALEZ  
 Witness PARAYNAS

REMARKS :

GAMMA RAY-NEUTRON CALIBRATION				GAMMA RAY-NEUTRON RECORDING			
Run N°	<u>1</u>			Run N°	<u>1</u>		
GAMMA RAY	Background	<u>70</u> cps		Fluid Level	<u>Surface</u>		
	Test Source	<u>380</u> cps		Sensitivity Tap	<u>GR 200</u>	<u>N 400</u>	
	Galva Increase	<u>100</u> div.		Time Constant	<u>GR 3</u>	<u>N 3</u>	
	Sensitivity Tap	<u>400</u>		Recording Speed	<u>6m/min</u>		
NEUTRON	Test Source Far	<u>200</u> cps		Eccentralizer	<u>NON</u>		
	Test Source Near	<u>450</u> cps		GRN cartridge N°	<u>GNC-D 292</u>		
	Galva divisions	<u>F75</u> <u>N180</u>	F: N: F: N:	GR detector N°	<u>SGD-D 143</u>		
	Sensitivity Tap	<u>500</u>		N detector N°	<u>NLD-A 395</u>		

